

TREVI AT THE GARDENS

LYING IN SECTION 35, TOWNSHIP 41 SOUTH, RANGE 42 EAST, CITY OF
PALM BEACH GARDENS, PALM BEACH COUNTY, FLORIDA.
SHEET 3 OF 5 APRIL, 2012

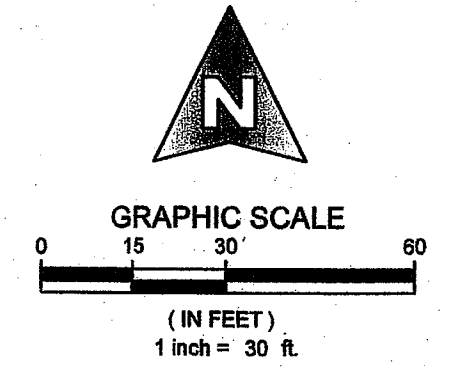
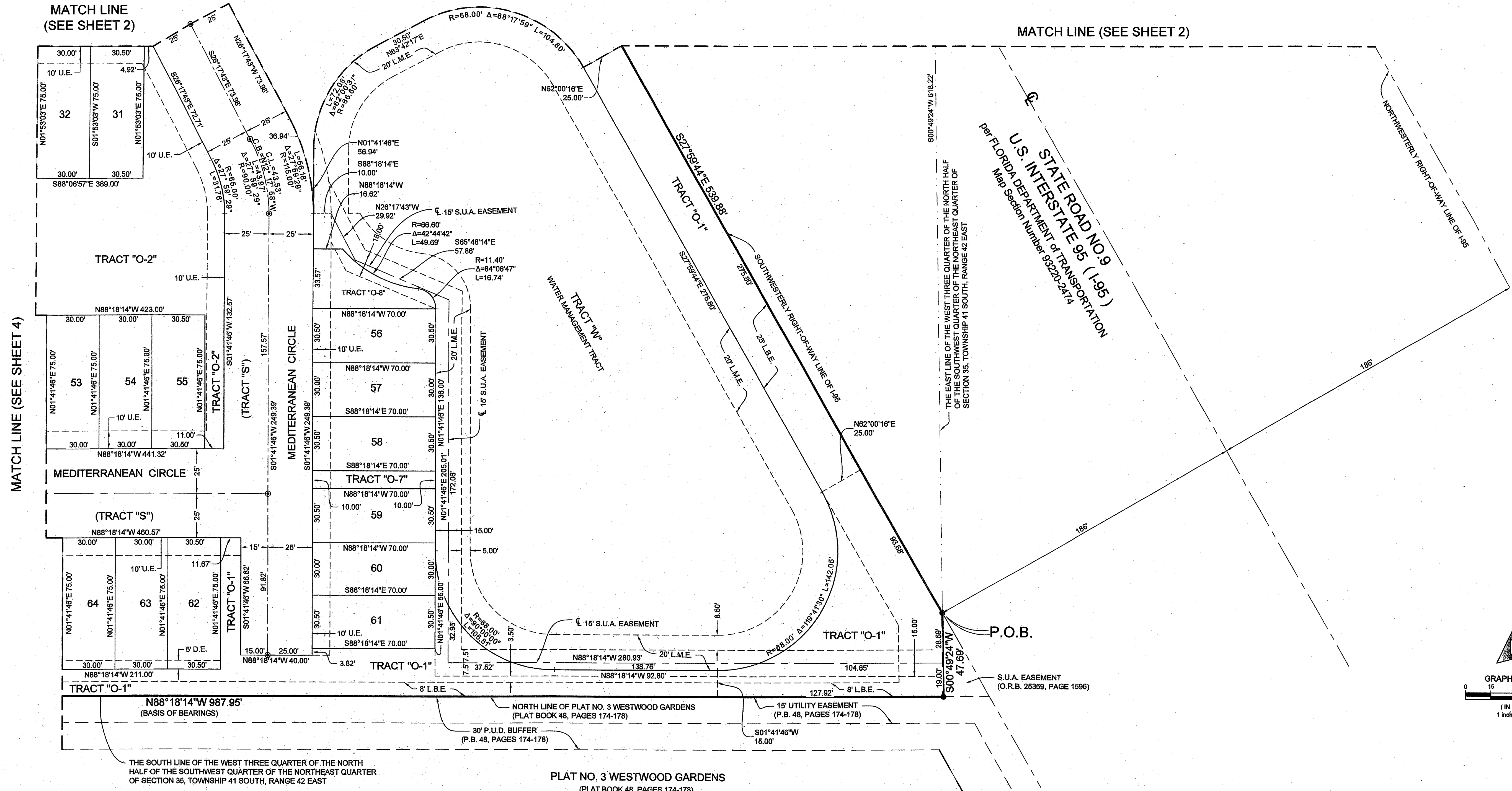
43

COUNTY OF PALM BEACH)
STATE OF FLORIDA) SS

THIS PLAT WAS FILED FOR RECORD AT _____ M. THIS DAY OF _____, 2012, AND DULY RECORDED IN PLAT BOOK NO. _____ ON PAGE _____ THRU _____

SHARON R. BOCK,
CLERK AND COMPTROLLER

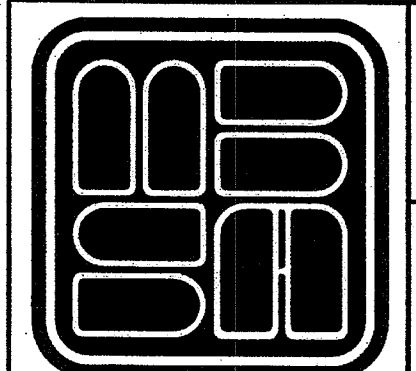
BY: _____ D.C.



THE SOUTH LINE OF THE WEST THREE QUARTER OF THE NORTH HALF OF THE SOUTHWEST QUARTER OF THE NORTHEAST QUARTER OF SECTION 35, TOWNSHIP 41 SOUTH, RANGE 42 EAST

PLAT NO. 3 WESTWOOD GARDENS
(PLAT BOOK 48, PAGES 174-178)

SHEET 3 OF 5



MICHAEL B. SCHORAH & ASSOCIATES, INC.
1850 FOREST HILL BLVD., SUITE 206
WEST PALM BEACH, FLORIDA 33406
EB# 2438 TEL. (561) 968-0080 FAX. (561) 642-9726 LB# 2438

TREVI AT THE GARDENS